

Rolfe East

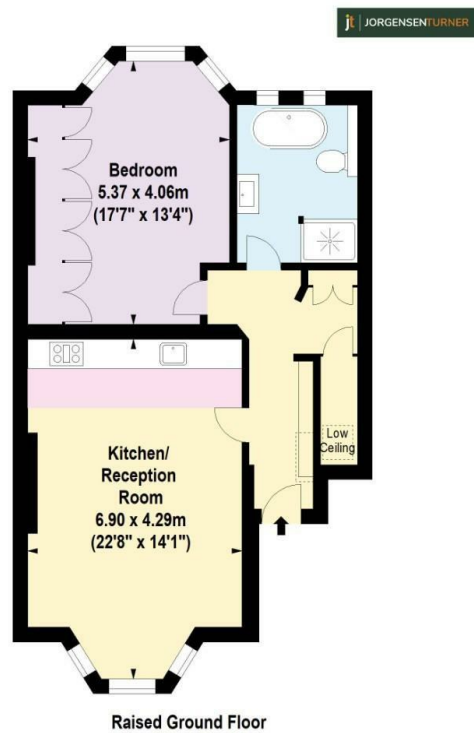


Elsham Road, London, W14 8HB

£920,000

- Raised Ground Floor Apartment
- Fully Fitted Bathroom with Walk in Shower
- Recently Refurbished
- Share of Freehold
- Separate Utility
- No Onward Chain
- Fully Fitted Kitchen with Berbel Induction Hob
- Alarm / Banham Security Locks





For Identification Purposes Only. Not To Scale. © www.totalvista.uk 2022

Elsham Road, W14

Approx. Gross Internal Area
68.66 Sq M - 738 Sq Ft

TOTALVISTA

Directions

Viewings

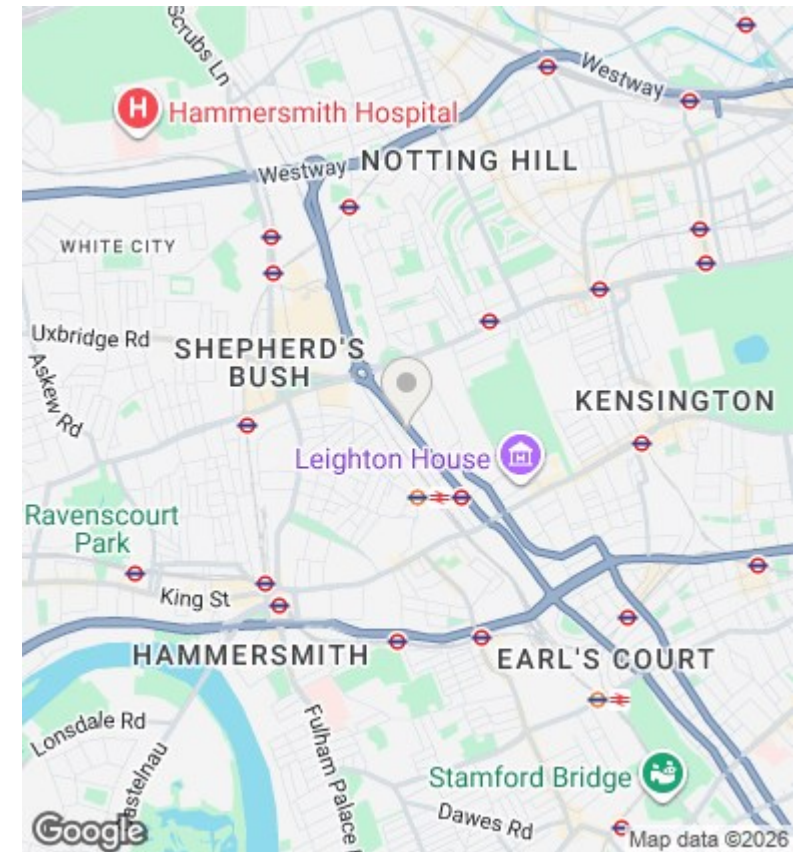
Viewings by arrangement only. Call 020 8567 2242 to make an appointment.

Council Tax Band

E

EPC Rating:

D



Energy Efficiency Rating		
	Current	Potential
Very energy efficient - lower running costs		
(92 plus) A		
(81-91) B		
(69-80) C		79
(55-68) D	68	
(39-54) E		
(21-38) F		
(1-20) G		
Not energy efficient - higher running costs		
England & Wales		EU Directive 2002/91/EC